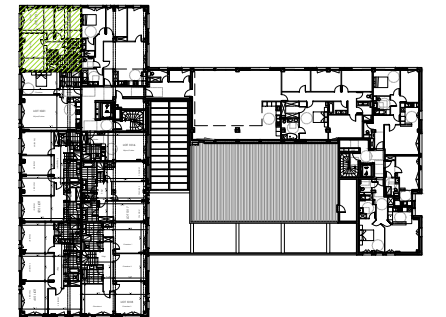


Belle Rive

30, boulevard Belle Rive
92500 RUEIL MALMAISON

LOT 1022
duplex

2e étage
4 pièces



Entrée	11.8m ²
WC 1	4.4m ²
Buanderie	3.4m ²
Séjour	47.0m ²
Cuisine	13.0m ²
Dégagement	4.7m ²
WC 2	1.4m ²
SdE	3.7m ²
SdB	5.1m ²
Chambre 1	15.9m ²
Chambre 2	14.8m ²
Chambre 3	13.8m ²

SURFACE TOTALE HABITABLE = 139.0m²

Terrasse plain-pied	20.2m ²
Solarium	81.9m ²

SURFACE TOTALE PRIVATIVE = 241.1m²

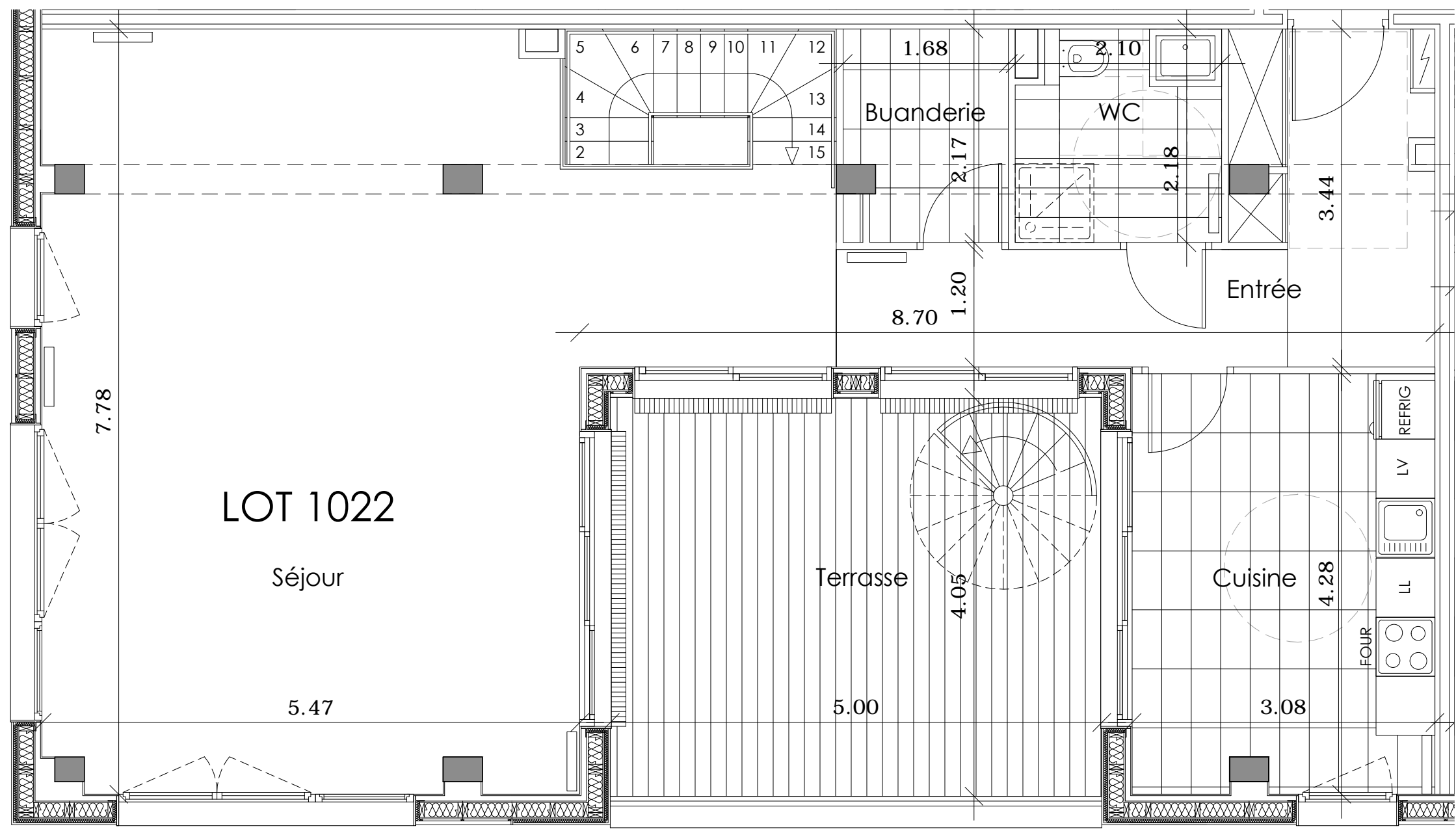
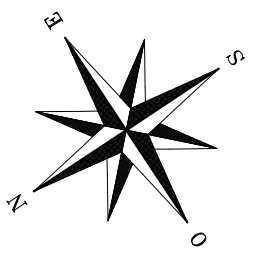
21 juillet 2014

Indice



LOFT DESIGN

IMMOBILIER

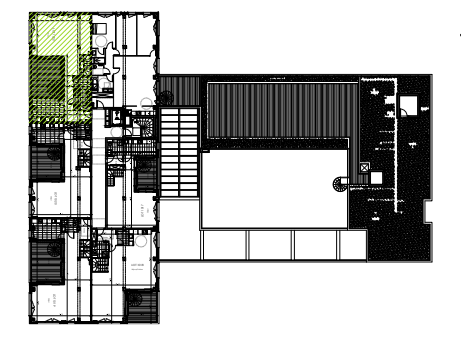


Belle Rive

30, boulevard Belle Rive
92500 RUEIL MALMAISON

LOT 1022
duplex

3e étage
4 pièces



Entrée	11.8m ²
WC 1	4.4m ²
Buanderie	3.4m ²
Séjour	47.0m ²
Cuisine	13.0m ²
Dégagement	4.7m ²
WC 2	1.4m ²
SdE	3.7m ²
SdB	5.1m ²
Chambre 1	15.9m ²
Chambre 2	14.8m ²
Chambre 3	13.8m ²

SURFACE TOTALE HABITABLE = 139.0m²

Terrasse plain-pied	20.2m ²
Solarium	81.9m ²

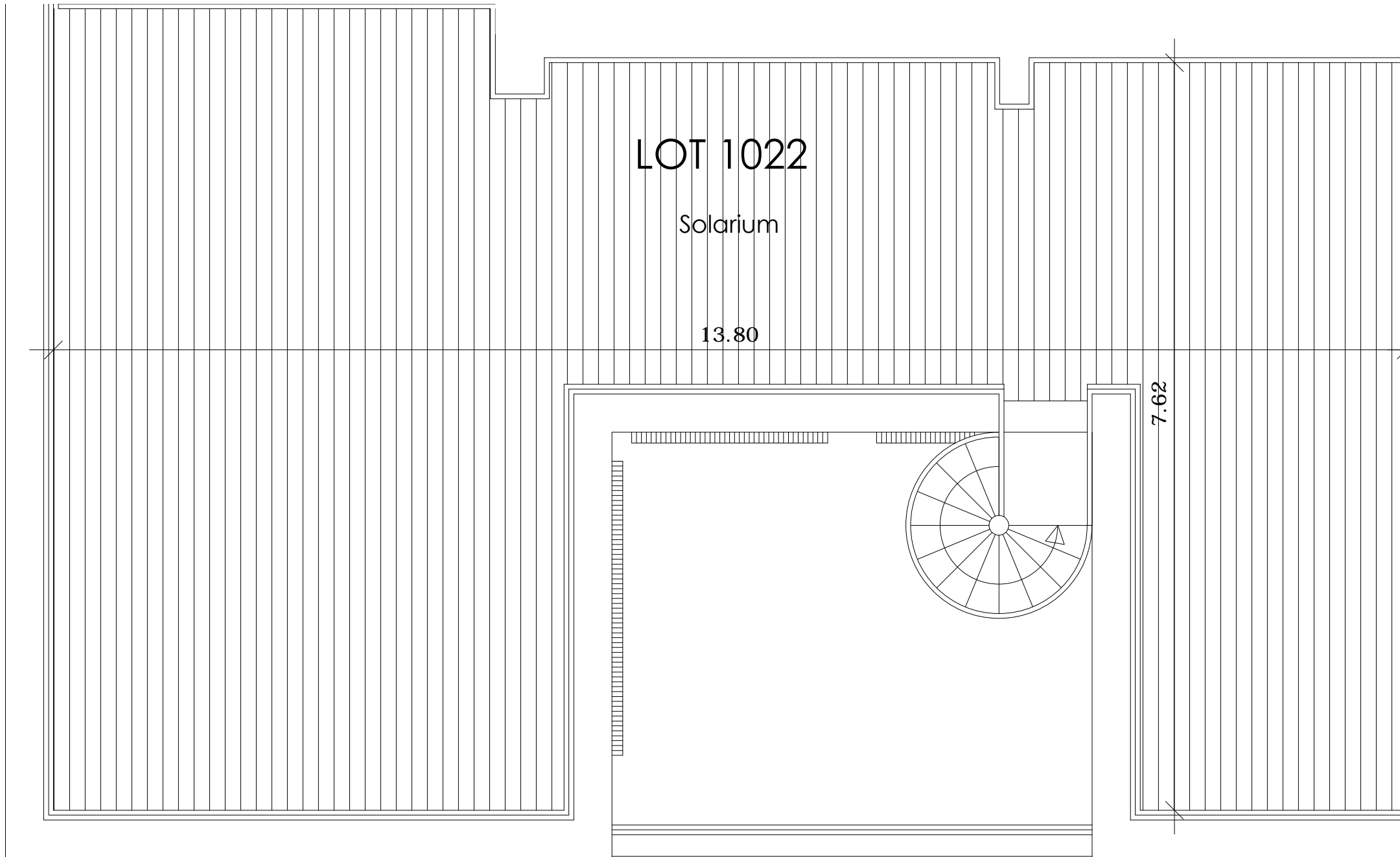
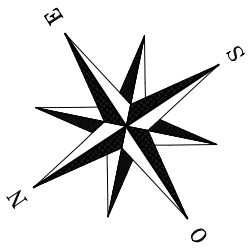
SURFACE TOTALE PRIVATIVE = 241.1m²

21 juillet 2014

Indice



LOFT DESIGN
IMMOBILIER

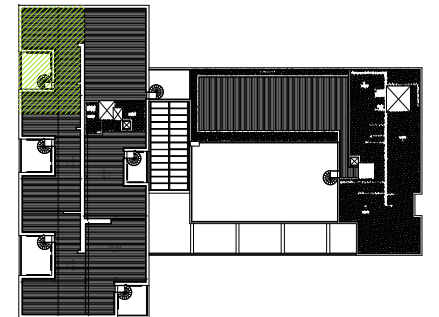


Belle Rive

30, boulevard Belle Rive
92500 RUEIL MALMAISON

LOT 1022
duplex

2e étage
4 pièces



Entrée	11.8m ²
WC 1	4.4m ²
Buanderie	3.4m ²
Séjour	47.0m ²
Cuisine	13.0m ²
Dégagement	4.7m ²
WC 2	1.4m ²
SdE	3.7m ²
SdB	5.1m ²
Chambre 1	15.9m ²
Chambre 2	14.8m ²
Chambre 3	13.8m ²

SURFACE TOTALE HABITABLE = 139.0m²

Terrasse plain-pied	20.2m ²
Solarium	81.9m ²

SURFACE TOTALE PRIVATIVE = 241.1m²

21 juillet 2014

Indice



LOFT DESIGN
IMMOBILIER