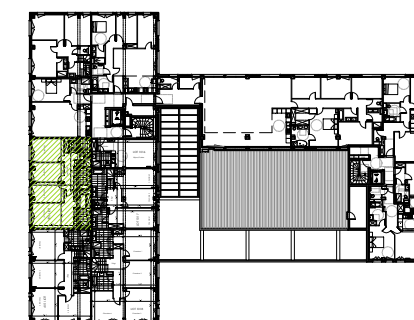


Belle Rive

30, boulevard Belle Rive
92500 RUEIL MALMAISON

LOT 1020
duplex

2e étage
5 pièces



Entrée	7.1m ²
WC 1	4.2m ²
Cuisine	10.9m ²
Séjour	47.5m ²
Dégagement	7.2m ²
Chambre 1	20.9m ²
Dressing	4.3m ²
SdE	5.6m ²
Chambre 2	11.1m ²
Chambre 3	10.8m ²
Chambre 4	14.3m ²
WC 2	1.6m ²
SdB	6.2m ²
Buanderie	3.7m ²

SURFACE TOTALE HABITABLE = 155.4m²

Terrasse plain-pied	16.6m ²
Solarium	74.4m ²

SURFACE TOTALE PRIVATIVE = 246.4m²

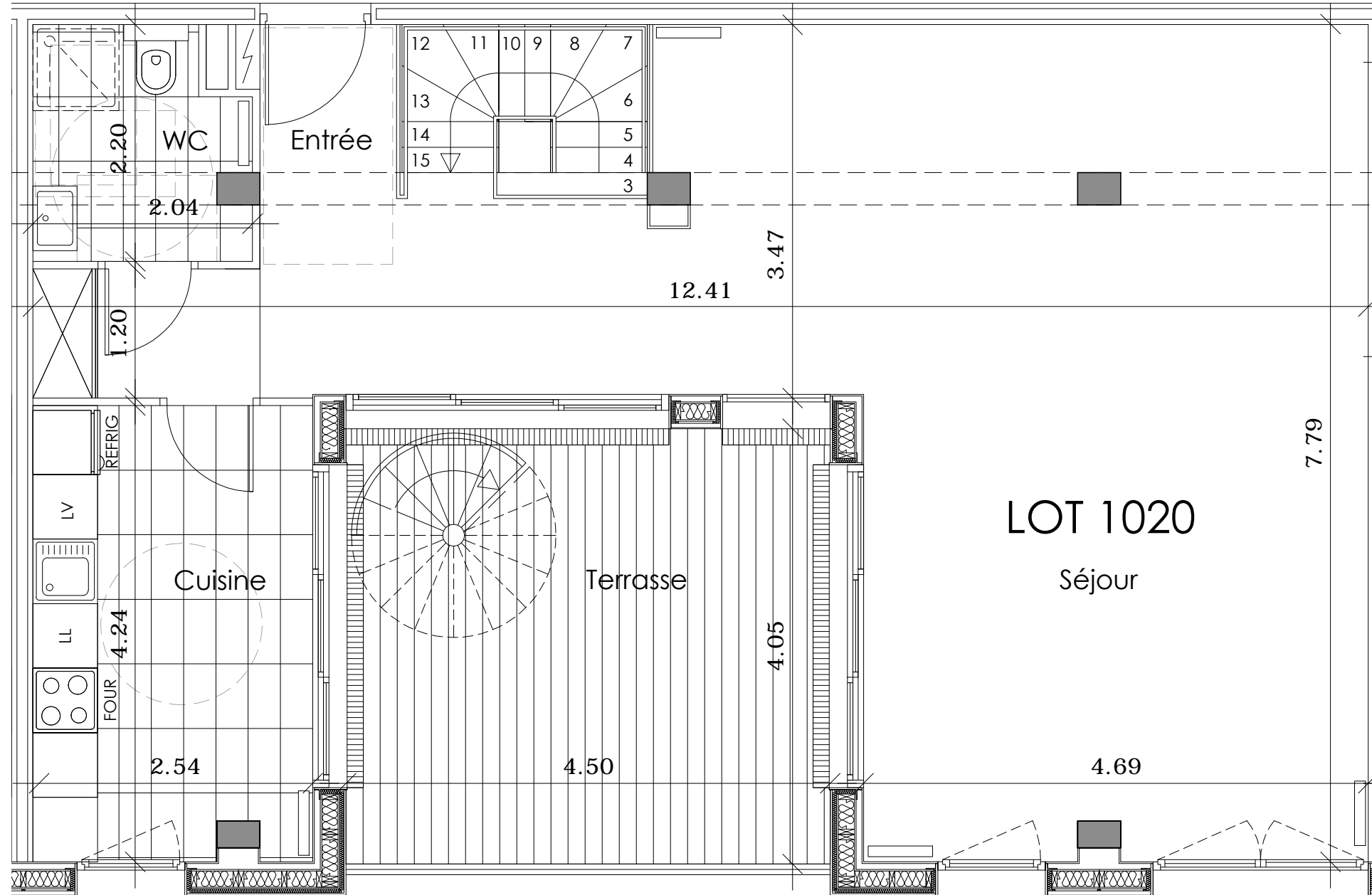
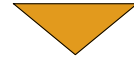
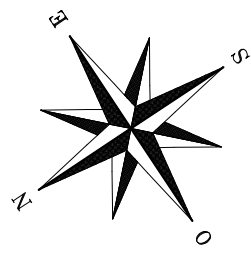
21 juillet 2014

Indice



LOFT DESIGN

IMMOBILIER

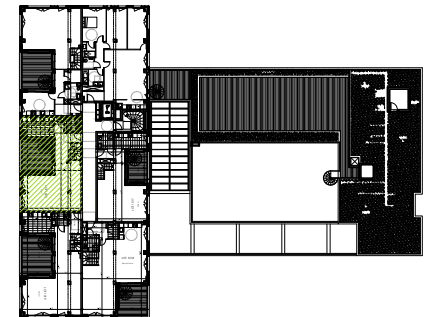


Belle Rive

30, boulevard Belle Rive
92500 RUEIL MALMAISON

LOT 1020
duplex

3e étage
5 pièces



Entrée	7.1m ²
WC 1	4.2m ²
Cuisine	10.9m ²
Séjour	47.5m ²
Dépassement	7.2m ²
Chambre 1	20.9m ²
Dressing	4.3m ²
SdE	5.6m ²
Chambre 2	11.1m ²
Chambre 3	10.8m ²
Chambre 4	14.3m ²
WC 2	1.6m ²
SdB	6.2m ²
Buanderie	3.7m ²

SURFACE TOTALE HABITABLE = 155.4m²

Terrasse plain-pied	16.6m ²
Solarium	74.4m ²

SURFACE TOTALE PRIVATIVE = 246.4m²

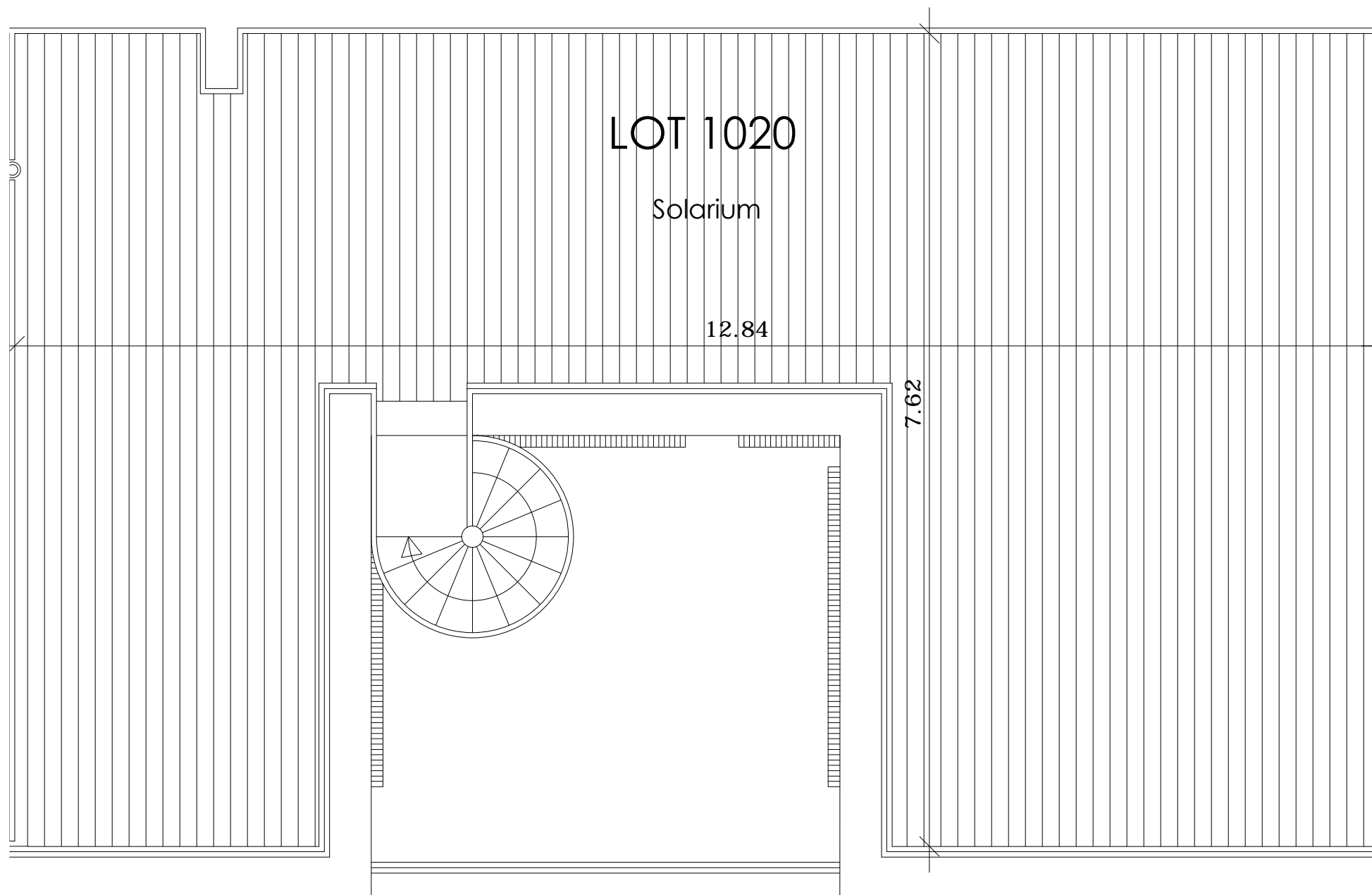
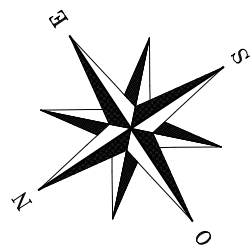
21 juillet 2014

Indice



LOFT DESIGN

IMMOBILIER

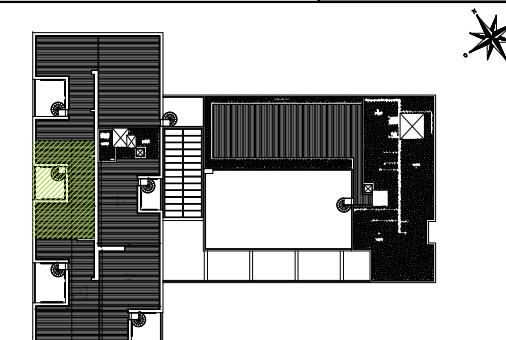


Belle Rive

30, boulevard Belle Rive
92500 RUEIL MALMAISON

LOT 1020
duplex

toiture
5 pièces



Entrée	7.1m ²
WC 1	4.2m ²
Cuisine	10.9m ²
Séjour	47.5m ²
Dégagement	7.2m ²
Chambre 1	20.9m ²
Dressing	4.3m ²
SdE	5.6m ²
Chambre 2	11.1m ²
Chambre 3	10.8m ²
Chambre 4	14.3m ²
WC 2	1.6m ²
SdB	6.2m ²
Buanderie	3.7m ²

SURFACE TOTALE HABITABLE = 155.4m²

Terrasse plain-pied	16.6m ²
Solarium	74.4m ²

SURFACE TOTALE PRIVATIVE = 246.4m²

21 juillet 2014

Indice



LOFT DESIGN

IMMOBILIER