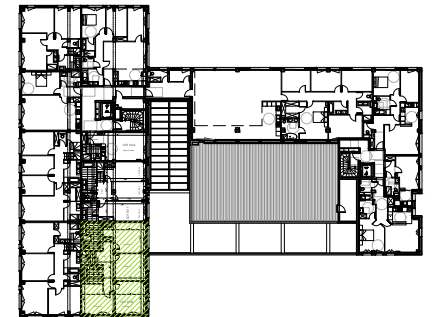


Belle Rive

30, boulevard Belle Rive
92500 RUEIL MALMAISON

LOT 1018
duplex

2e étage
5 pièces



Entrée	5.7m ²
Buanderie	2.7m ²
Séjour/Cuisine	67.5m ²
WC 1	4.4m ²
Dégagement	11.5m ²
Chambre 1	20.4m ²
SdE	6.9m ²
Chambre 2	15.6m ²
Chambre 3	18.0m ²
Chambre 4	15.9m ²
WC 2	2.8m ²
SdB	6.4m ²

SURFACE TOTALE HABITABLE = 177.8m²

Terrasse plain-pied	14.6m ²
Solarium	79.2m ²

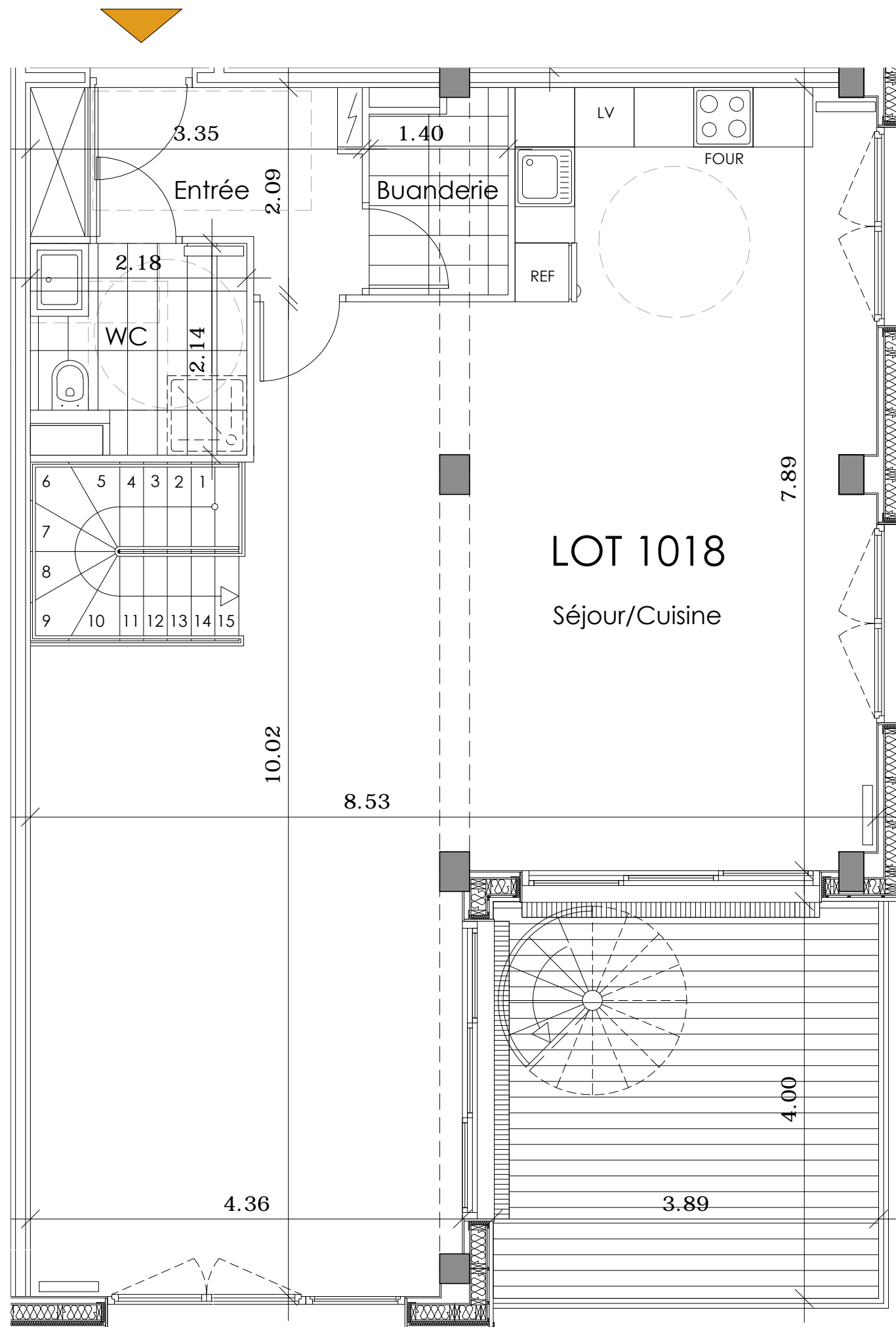
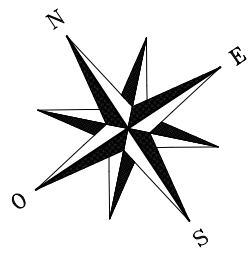
SURFACE TOTALE PRIVATIVE = 271.6m²

21 juillet 2014

Indice



LOFT DESIGN
IMMOBILIER

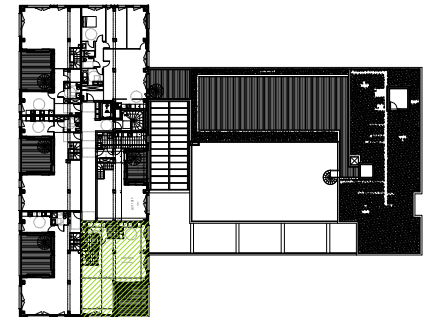


Belle Rive

30, boulevard Belle Rive
92500 RUEIL MALMAISON

LOT 1018
duplex

3e étage
5 pièces



Entrée	5.7m ²
Buanderie	2.7m ²
Séjour/Cuisine	67.5m ²
WC 1	4.4m ²
Dégagement	11.5m ²
Chambre 1	20.4m ²
SdE	6.9m ²
Chambre 2	15.6m ²
Chambre 3	18.0m ²
Chambre 4	15.9m ²
WC 2	2.8m ²
SdB	6.4m ²

SURFACE TOTALE HABITABLE = 177.8m²

Terrasse plain-pied	14.6m ²
Solarium	79.2m ²

SURFACE TOTALE PRIVATIVE = 271.6m²

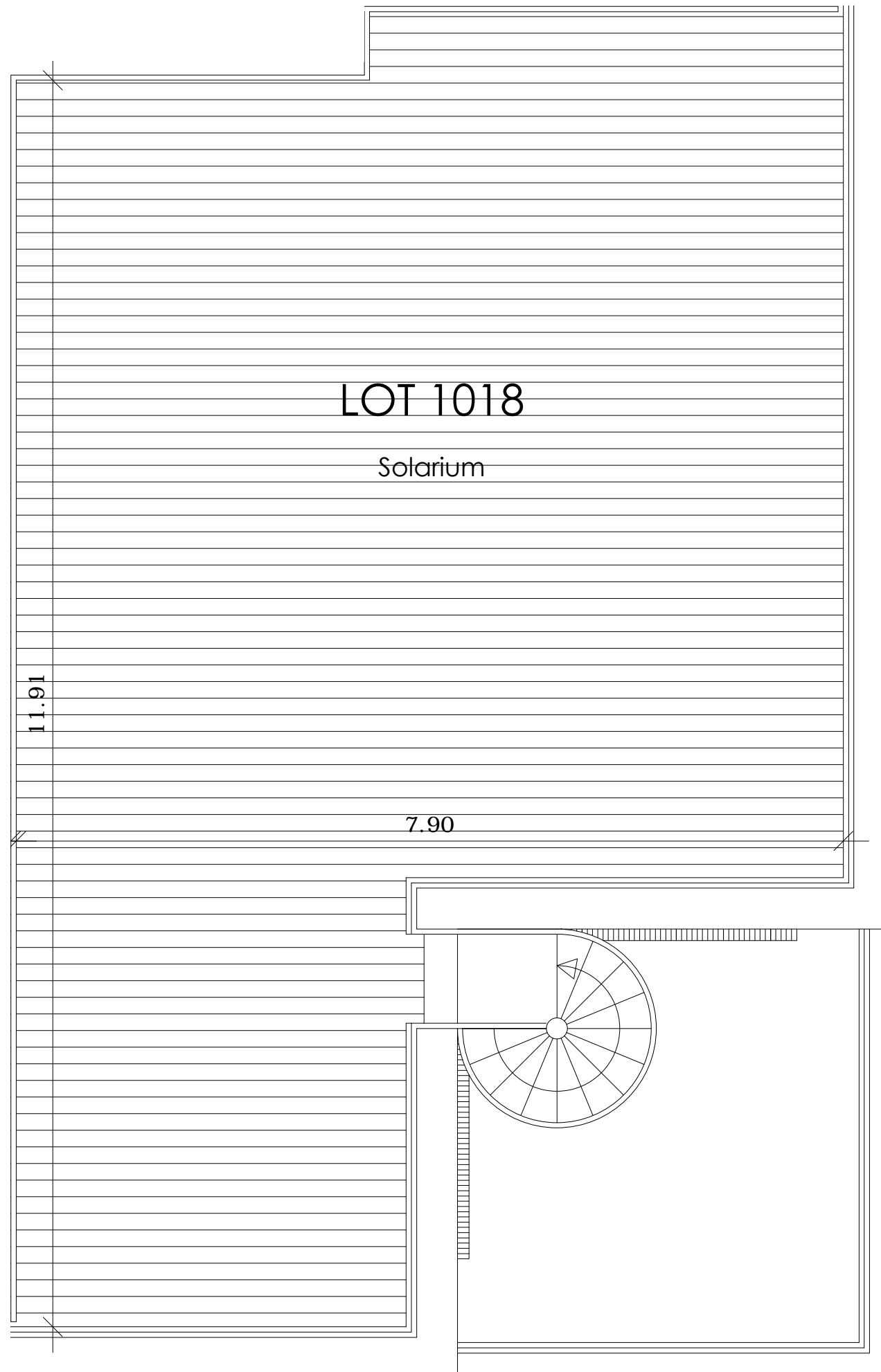
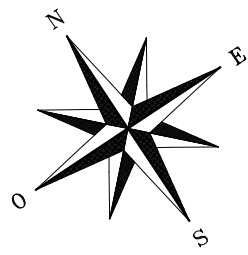
21 juillet 2014

Indice



LOFT DESIGN

IMMOBILIER

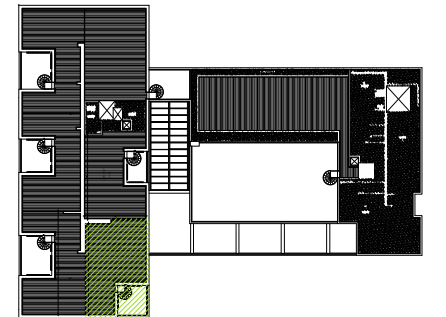


Belle Rive

30, boulevard Belle Rive
92500 RUEIL MALMAISON

LOT 1018
duplex

toiture
5 pièces



Entrée	5.7m ²
Buanderie	2.7m ²
Séjour/Cuisine	67.5m ²
WC 1	4.4m ²
Dégagement	11.5m ²
Chambre 1	20.4m ²
SdE	6.9m ²
Chambre 2	15.6m ²
Chambre 3	18.0m ²
Chambre 4	15.9m ²
WC 2	2.8m ²
SdB	6.4m ²

SURFACE TOTALE HABITABLE = 177.8m²

Terrasse plain-pied	14.6m ²
Solarium	79.2m ²

SURFACE TOTALE PRIVATIVE = 271.6m²

21 juillet 2014

Indice



LOFT DESIGN
IMMOBILIER